


APARTMENT MAP

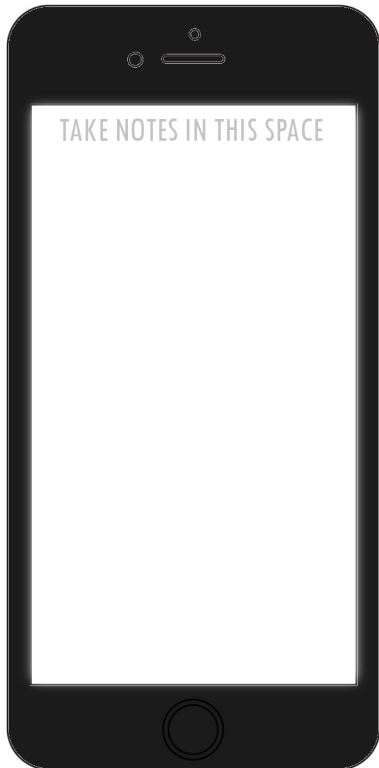
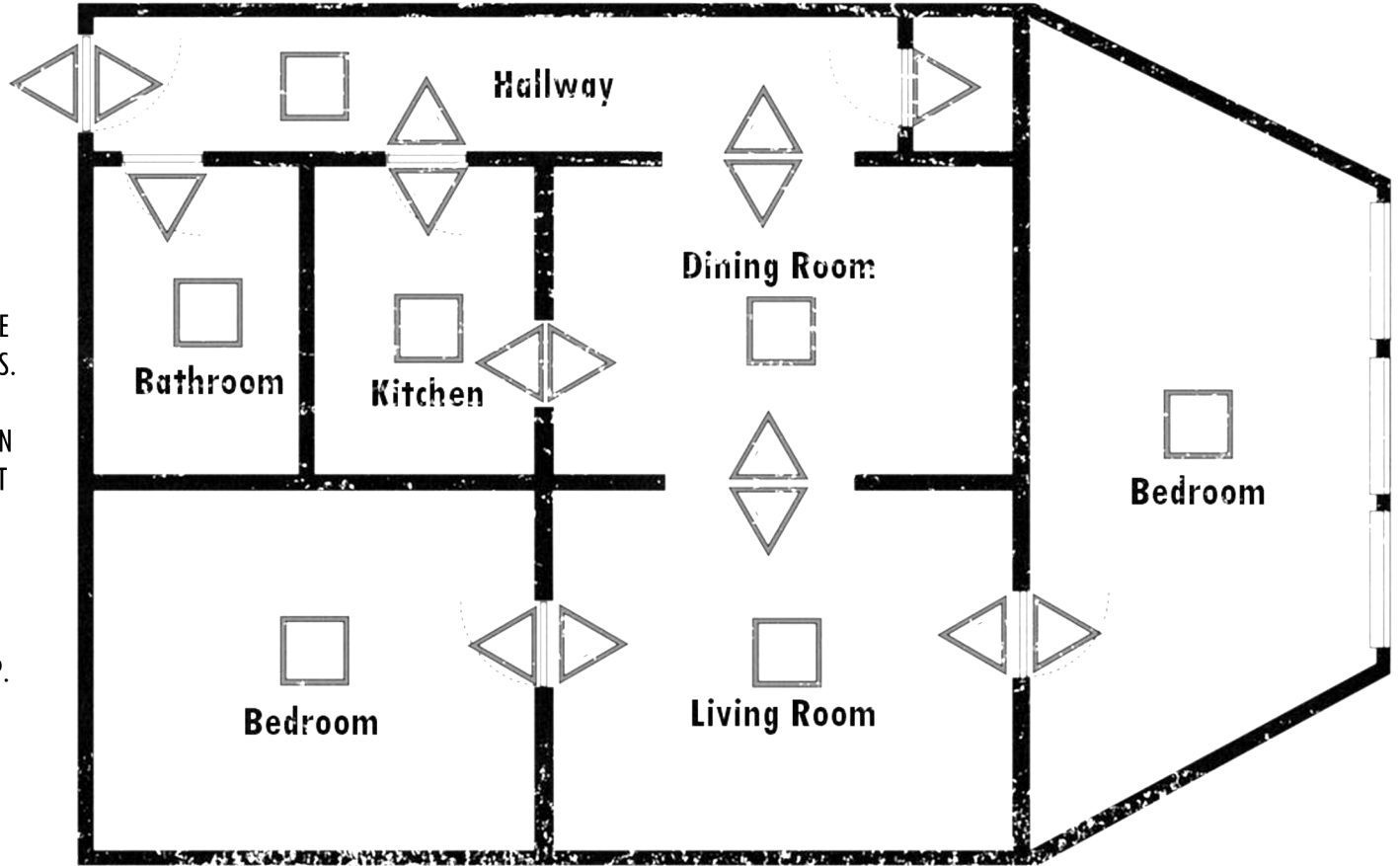
KEEP THIS PAGE OPEN AT ALL TIMES.

YOU WILL USE IT TO NAVIGATE THROUGH THE APARTMENT AND THE STORY.

TO MOVE TO A NEW ROOM, GO TO THE BOOK ENTRY INDICATED BY THE ARROW POINTING TO IT FROM THE ROOM YOU ARE PRESENTLY. DO NOT SKIP ARROWS.

ONCE YOU ARE GIVEN AN ENTRY NUMBER TO WRITE IN THE BOX FOR THAT ROOM, YOU CAN RETURN TO IT AT ANY TIME BY GOING TO THAT BOOK ENTRY.

WHEN YOU ENCOUNTER THIS SYMBOL  YOU CAN RETURN TO THE ROOM IN WHICH YOU PRESENTLY FIND YOURSELF, OR RETURN TO THIS MAP.



THIS IS YOUR PHONE.
DO NOT LOSE IT.



WHEN YOU ENCOUNTER THE HOURGLASS SYMBOL IN AN ENTRY, CROSS OUT THE NEXT BOX.

Hourglass symbol icon

→	→	4	→	→	↘
62					37
↑					↓
↑					↓
↖	2	←	←	←	43

WHEN YOU CROSS OUT A NUMBER, GO READ THE CORRESPONDING ENTRY IMMEDIATELY.

WHEN YOU ENCOUNTER THE BATTERY SYMBOL IN AN ENTRY, CROSS OUT THE NEXT EMPTY BOX.

Battery symbol icon

--	--	--	--	--	--	--	--	--	--

T	H	E		
R	Ø	Ø	M	S